

The Bee Line

Pineywoods Beekeepers Association

Next meeting May 15, 2026, 6:30 pm

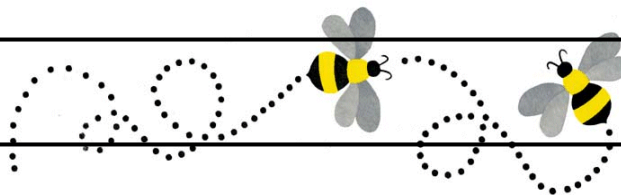
Lufkin VFW Post 1836

1800 Ford Chapel Road, Lufkin

<https://www.pineywoodsbeekeepers.org/>

Volume 26 Issue 5

May 2026



MAY PROGRAM

Note that this month we meet on Friday, May 15th, rather than our usual second Thursday due to a VFW event.

Susan Precup will talk about supering, space management, pest management, and seasonal activities.

SEASONAL TIPS

Robert Jones

May is the first time you will be able to possibly extract excess honey. On colonies that have the extra bee resources, you will see excess only if the weather allows for it. Too much rain means that no extra resource will be there. If there is extreme drought, the resources will not be there. Rainfall, along with warm days, are essential to good nectar flows. The warmer the days, the better the nectar flow will be and the cooler the days, the slower the nectar flow will be. Either too much or too little rain and the nectar production will be low.

Always prepare for the flow by knowing the traditional days it starts and stops. Keep a watch on these seasonal plants to be sure of the actual timing of the nectar production. This will keep you ahead on supers.

The mid to the last week of May starts the last big nectar flow of the Tallow, which is the largest nectar flow in Deep East Texas. This flow will end in the third week of June. It flows a very long time and produces the majority of what we extract.

This is a good time to have new foundation pulled and extra honey captured. The plan is still not to get behind on adding your supers. Swarms will continue during this heavy nectar time. Continue to feed small growing hives for brood production.

WHAT'S BUZZING

June 13, 2026 – Texas Beekeepers Association Summer Clinic, Victoria. Registration is open now. Lunch cannot be guaranteed for registrations after May 31st. <https://texasbeekeepers.org/summer-clinic/>

Hybrid bee in CA

A unique hybrid honey bee found only in southern California had 68% fewer mites and were five times less likely to require chemical treatments than colonies headed by commercial queens.

https://www.goodnewsnetwork.org/unique-honeybees-found-only-in-southern-california-can-fend-off-deadly-mites/?utm_source=newsletter.goodnewsnetwork.org&utm_medium=newsletter&utm_campaign=owls-from-around-the-world&_bhlid=0382fbf3772af6cc9d78168e0e096153050bb763

Program on bee truck accidents

Several members from PBA attended the presentation at Beech Grove Fire Department about “what to do if a semi truck full of honey bees turns over” ... and all those hives are knocked off the truck and all those bees are buzzing around, wondering what just happened?! Michael Lamb from Lamb’s Honey Farm shared a lot of great info, including his estimate of 300,000-400,000 bee hives in and near the Jasper county area. East Texas is considered a great place for professional migratory beekeepers because our spring and summer are so full of flowers and other great resources that bees love.

That’s a lot of hives!

The main point Mr. Lamb emphasized is to focus on people first, such as the truck driver, or other people, if other vehicles were involved in the incident. He explained that the truckload of bees will be covered by their business insurance and that the beekeeper’s business “equipment” is not the first priority in that situation. He discussed some basics about bee behavior and what the firefighters might expect, and also suggested that fire fighters have at least a few bee suits or bee shirts with veils available in advance. He will be maintaining a list of hobby beekeepers who would be willing to come help in the event of an incident. Even though fire fighters are likely to be spraying water or foam, you would still want to bring your smoker, because that can still be helpful toward calming the bees. At the end of the talk, he also gave away free honey from North Dakota, which was a great gift.

Lamb’s Honey Farm

<https://sites.google.com/lambshoneyfarm.com/lambshoneyfarm/home>

Free beekeeping class

1st & 3rd Sundays at 5:30 pm at Nacogdoches Seventh Day Adventist Church playground April 15th – Nov 15th. Facebook post by Vasiliy Osadchuck from Ukraine with over 40 years’ experience. Theory and hands-on for beginners plus advanced discussions for the pros.

At-Home Beekeeping Series

Presented by the Lawrence Co. Alabama Extension Office. 6:30-7:30 pm. Recordings from this series are available **for only two weeks** after each session on the Lawrence County Alabama Extension Office Facebook page.

<https://www.aces.edu/blog/topics/bees-pollinators/at-home-beekeeping-series/>

2026 Dates and Topics

May 26 — TBD - Michael Goblirsch, US Department of Agriculture Agricultural Research Service

June 30 — Queen Management Essentials

Juliana Rangel, Texas A&M University

Honey Glazed Grilled Fruit Salad

<https://honey.com/recipe/honey-glazed-grilled-fruit-salad>

Yield: Makes 6 to 8 servings

Ingredients

1 large watermelon
1 pineapple
1 honeydew melon
8 mission figs
1 cup orange juice
1 cup honey
2 limes
pinch of salt
chile fruit seasoning
wooden skewers, soaked in water

Directions

Peel and slice watermelon, pineapple, and honeydew into 1-inch chunks and figs in half. Preheat grill to medium heat and wipe grill with halved lime.

Place cut fruit into large mixing bowl, and pour orange juice over and toss with a pinch of salt. Assemble fruit into kabobs by piercing it through the soaked skewer and stacking the fruit, alternating as you go.

Leave at least 2 inches of space on blunt end of the skewer to handle kabob safely while grilling.

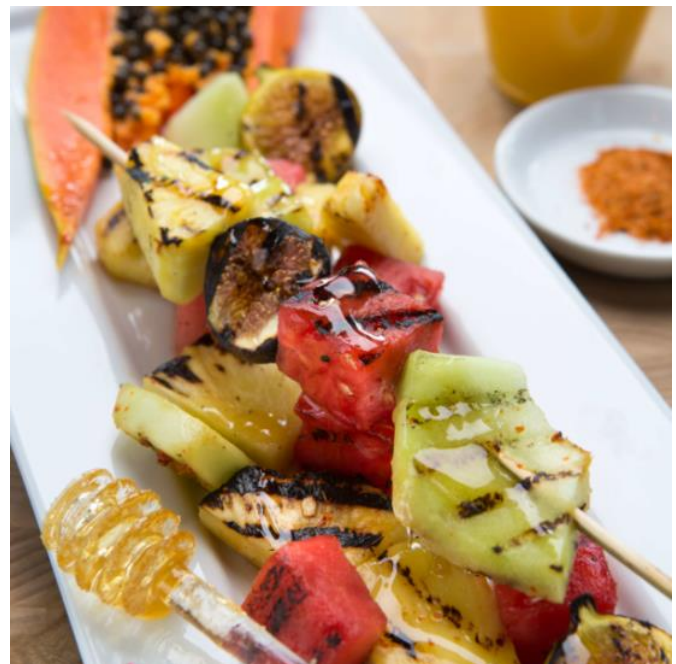
Place fruit on hot grill, turning on each side every three minutes.

Remove from grill and drizzle with honey and sprinkle with chile fruit seasoning. Serve warm on the skewer.

Recipe courtesy of Chef Michell Sanchez, Grilling Expert and Owner/Executive Chef of Latin House Grill, made for the National Honey Board



The poster for "BEEKEEPING 101" features a yellow and green color scheme with hexagonal patterns. At the top, logos for PVAMU Extension, CGR, Texas A&M Agrilife Extension, and The Village Nac are displayed. The title "BEEKEEPING 101" is in large, bold, green letters. Below the title, it states "PRESENTED BY GARETT SLATER, TEXAS A&M AGRILIFE EXTENSION ASSISTANT PROFESSOR AND HONEY BEE EXTENSION ENTOMOLOGIST". The event details are: "Date: Friday, May 29th, 2026", "Time: 9 A.M. - 1 P.M.", and "Location: The Village Nac, 1188 CR 823 Nacogdoches". A green hexagon with white text says "FREE to Attend". The "AGENDA:" section lists: "Bee Biology, Behavior & Management", "Getting Started Beekeeping", "A Year in Beekeeping", "Live Hive Inspections - Suit up to safely view inside a working hive!", "FREE Lunch & Honey Tasting", and "Q&A with the Pineywoods Beekeepers Association". A photo shows hands in white gloves holding a wooden frame covered in bees. At the bottom, a disclaimer reads: "THIS INSTITUTION IS PROHIBITED FROM DISCRIMINATING ON THE BASIS OF RACE, COLOR, NATIONAL ORIGIN, SEX, DISABILITY, AGE, OR REPRISAL OR RETALIATION FOR PRIOR CIVIL RIGHTS ACTIVITY IN ANY PROGRAM OR ACTIVITY CONDUCTED OR FUNDED BY USDA. PERSONS WHO REQUIRE LANGUAGE SERVICES OR A REASONABLE ACCOMMODATION, PLEASE CONTACT JATAYLOR@PVAMU.EDU BY EMAIL OR CALL 936-635-7911 A MINIMUM OF 21 DAYS BEFORE THE EVENT."



Jasper library



Fred Elementary

